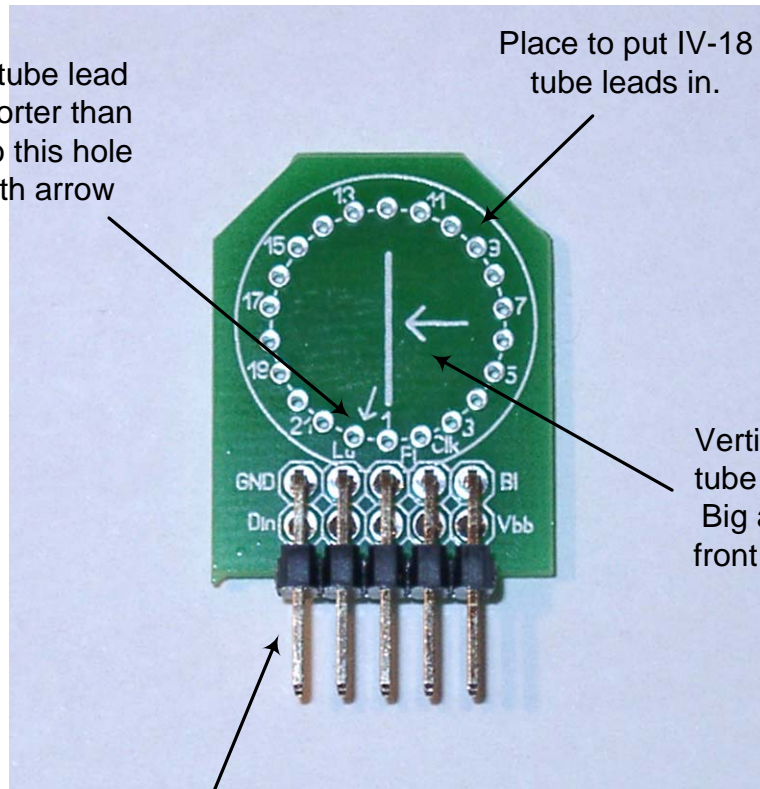


IV18 VFD Clock assembling IV-18 tube board

Insert key tube lead (slightly shorter than others) into this hole market with arrow

Place to put IV-18 tube leads in.

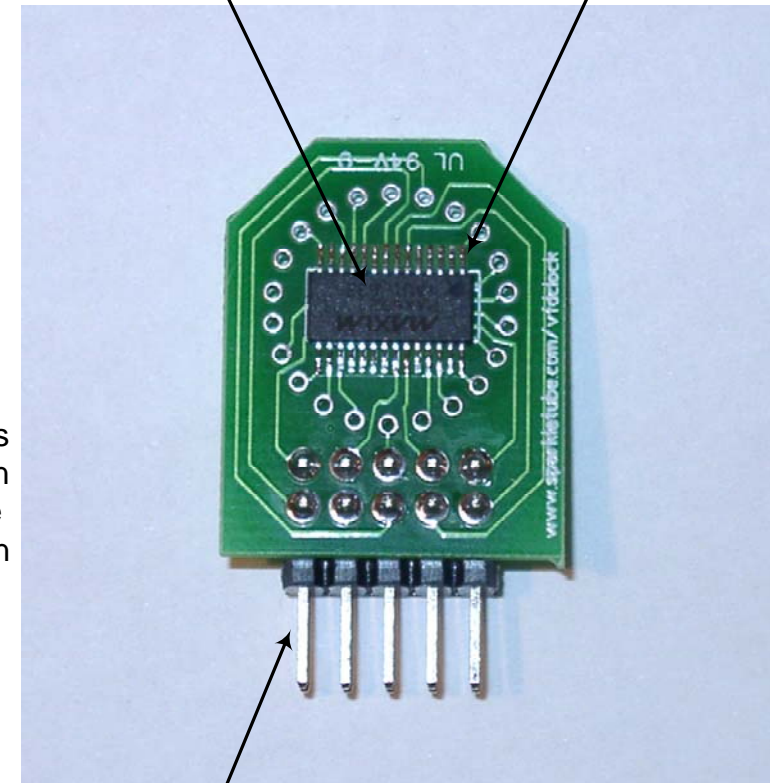


Vertical line shows tube digits position
Big arrow – to the front view direction

2 rows
5 pin plug

MAX6921AUI

Pin number one



2 rows
5 pin plug

Notice

- Insert key tube lead (slightly shorter than other) into the hole market with small arrow
- Use plenty of liquid flux to solder the MAX6921 SMD chip
- Please find more recommendation in My Recommendation document